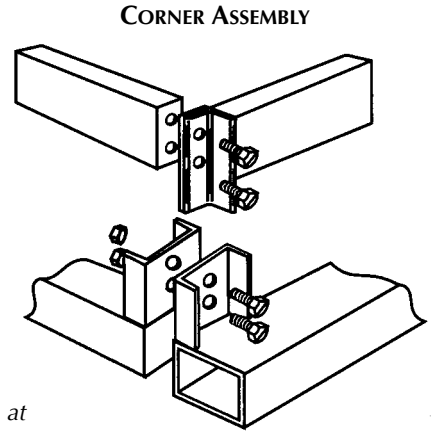
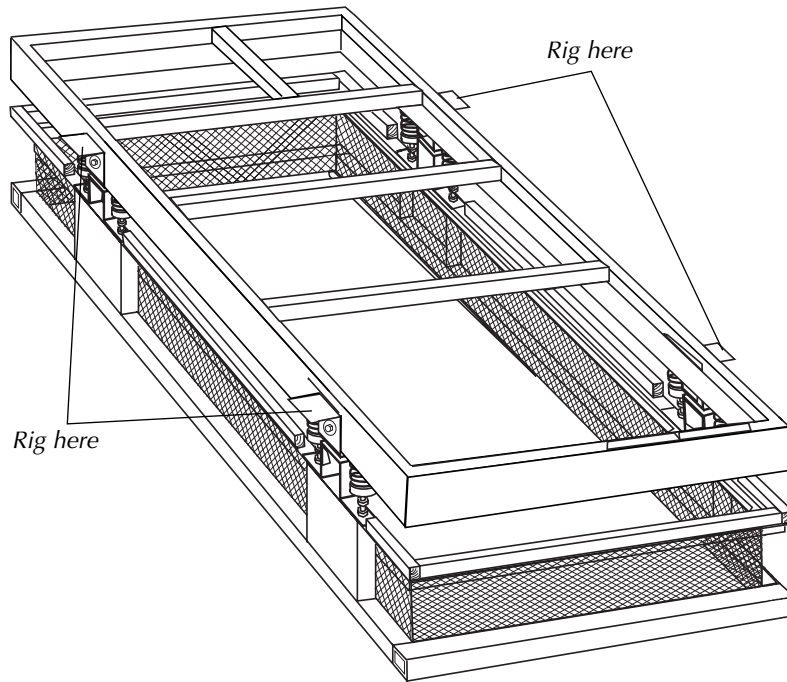


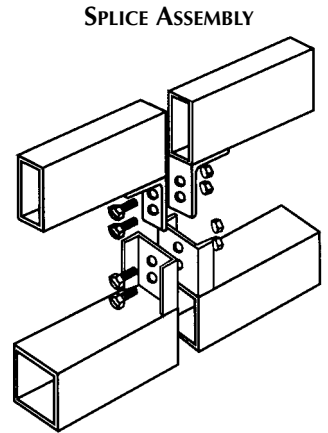
# VMC "P" Series Curbs – Installation Instructions

**1 REFER TO SUBMITTAL DRAWINGS FOR ACTUAL ATTACHMENT DETAILS AND RIGGING INSTRUCTIONS.** Rig the roof curb or rail to the roof as delivered. (NOTE: Some longer curbs may require field assembly.) Using spreader bars if required, rig curb within spring pockets or directly below curb. As each curb is different, it is the contractor's responsibility to rig the curb properly so that no bending or twisting occurs. If assembling curb on the ground, refer to submittal drawings to determine if cross bracing must be installed and install bracing where indicated before lifting to the roof. Do not tighten assembly bolts before rigging to roof. Once curb is rigged to roof, square curb corners, level top tube, and tighten assembly bolts.

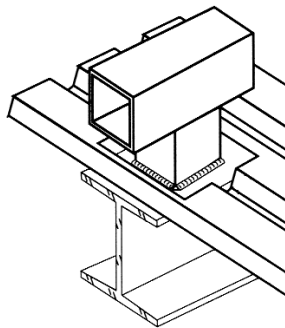


Use two bolts at each connection.

Weld all splice and corner connections.

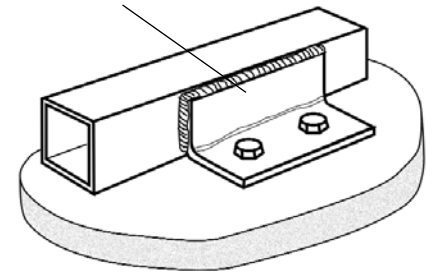


**2 ROOF ATTACHMENT**  
**Steel Roof** – at each spring pocket location, the contractor will cut a hole in the Q-deck, exposing the supporting structural steel or bar joist. The contractor will supply 3"x 2" steel tube stanchions to be welded to the roof steel as detailed in the submittal drawings. Set curb on exposed tube stanchions and weld curb as indicated in submittal drawings.

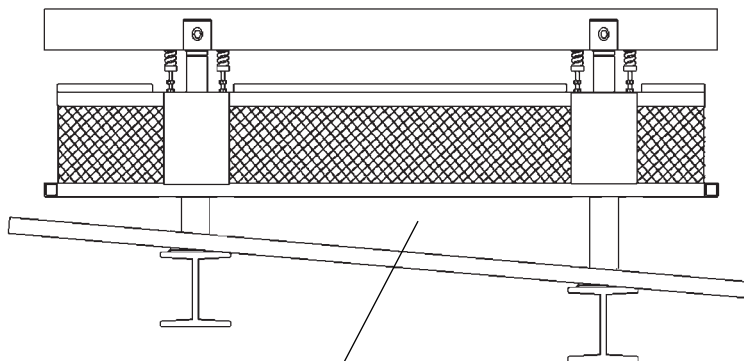


**Concrete Roof** – roof curb is supplied with angle steel bracketing attached to the bottom tube. The contractor shall set curb in place, drill boltholes into roof deck and supply anchor bolts to be installed where indicated in the submittal drawings.

Contractor supplied if not specified



Expansion bolt to concrete



Contractor to blank off this space and insulate as required

## ROOF PITCH

If the roof is sloped, the contractor will compensate for the difference in pitch by increasing or decreasing the stanchion height as required. The contractor will supply fabricated sheet metal to cover the space between the bottom of the curb and the roof.

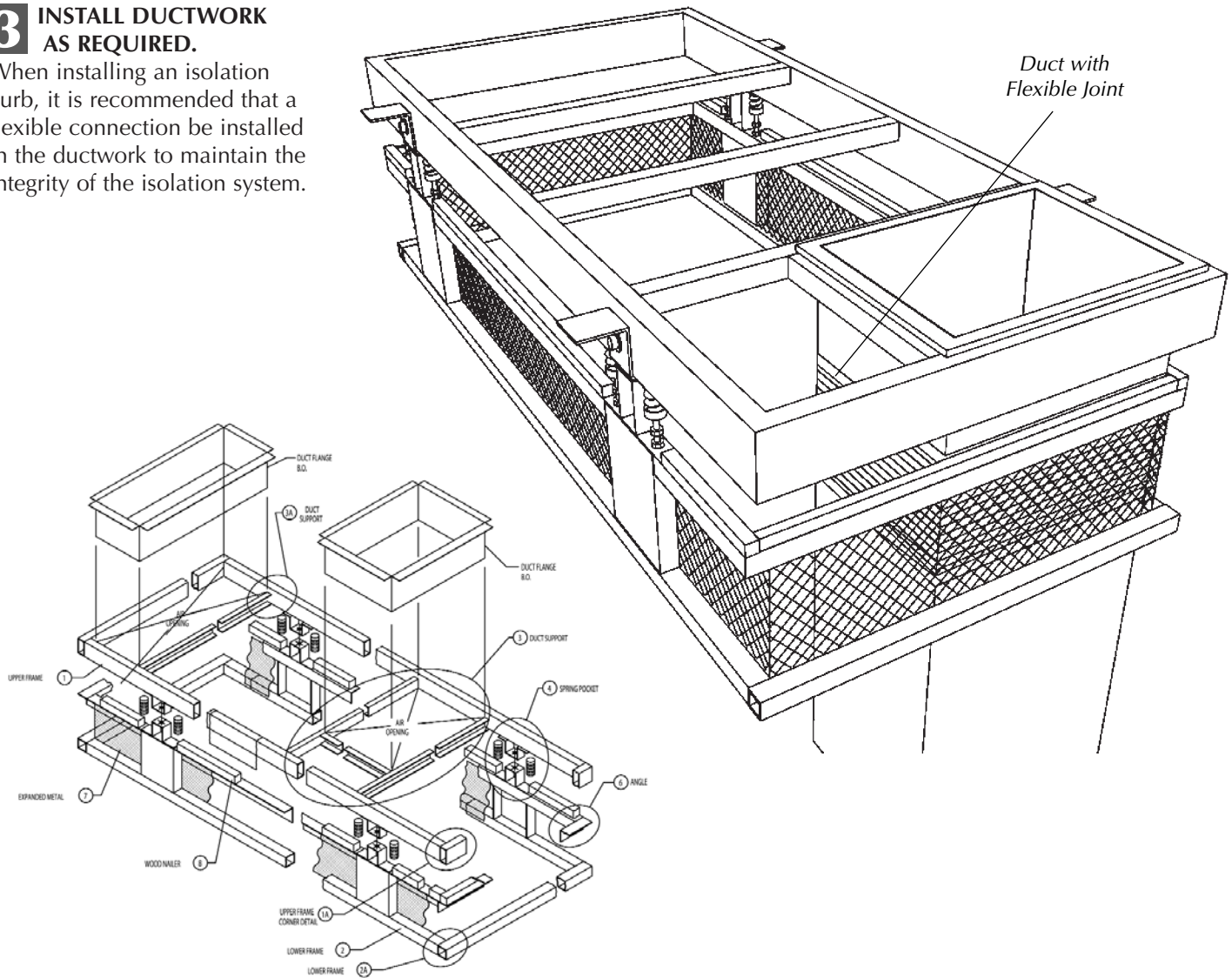


VIBRATION MOUNTINGS & CONTROLS, INC.  
 An Aeroflex, Inc. Company

113 Main St., Box 270 • Bloomingdale, NJ 07403  
 tel/ 973/838-1780 or TOLL FREE 1-800-LOW-VIBE • fax 973/492-8430

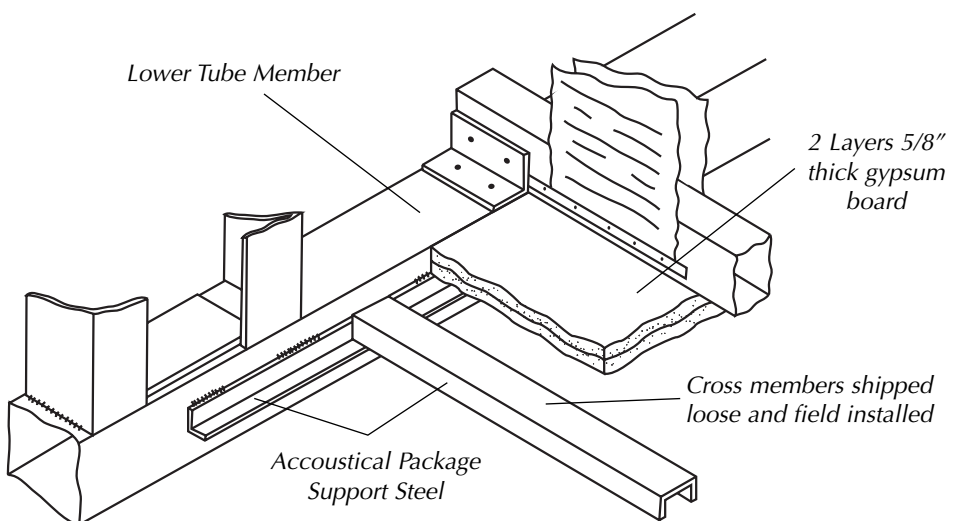
## 3 INSTALL DUCTWORK AS REQUIRED.

When installing an isolation curb, it is recommended that a flexible connection be installed in the ductwork to maintain the integrity of the isolation system.



## 4 INSTALLATION OF OPTIONAL ACOUSTICAL PACKAGE

**Sound Attenuation Package** – consists of angle steel welded to the inside perimeter of the curb and pre-cut, notched cross support members. Sound attenuation is achieved with 2 layers of 5/8" thick contractor-supplied gypsum board. The contractor shall cut the gypsum board to size and install around all duct penetrations. Caulk all exposed joints.



## 5 INSTALL CLOSED-CELL NEOPRENE SEAL AROUND TOP PERIMETER OF CURB AND ON ALL DUCT SUPPORTS.

Loosen all seismic hold down bolts so the rooftop unit will sit on the top tube and not the seismic

hold-downs. (NOTE: It may be necessary to remove all seismic hold down clips prior to rigging unit to curb.) Rooftop equipment may now be rigged and installed on the curb.

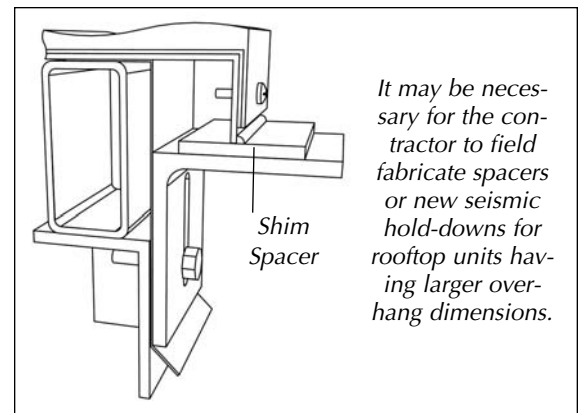
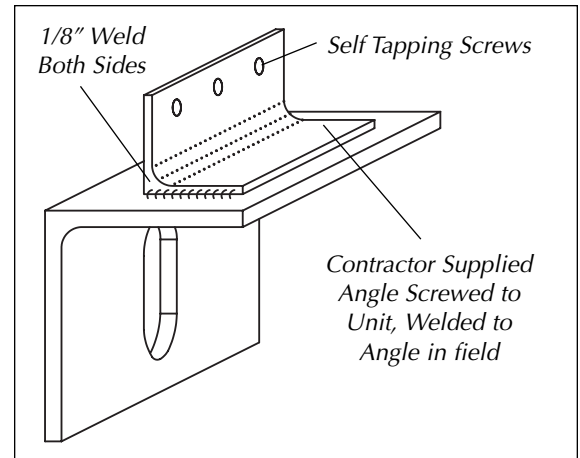
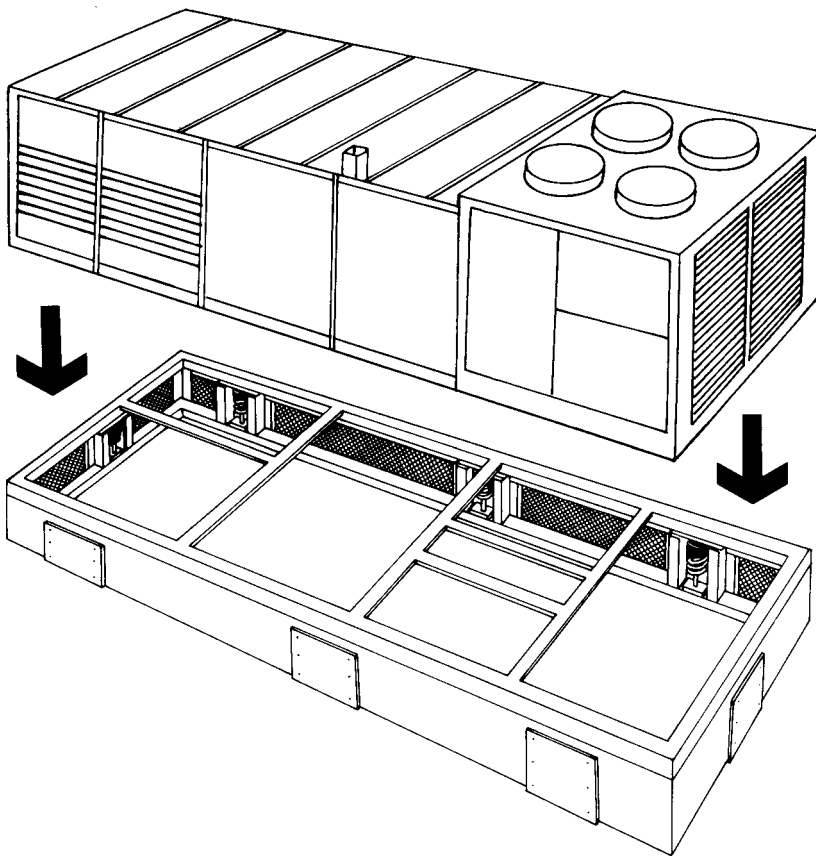
# VMC "P" Series Curbs – Installation Instructions

## 6 SEISMIC HOLD-DOWN INSTALLATION

**a)** Most rooftop units will overhang the roof curb. The seismic hold down in the curb is designed to accommodate the overhang. (P6200 units will accommodate overhangs of 1" to 4 1/2" and P6300 units will accommodate overhangs of 1" to 6").

**b)** Reinstall seismic clips and slide up to meet overhang of the rooftop unit. Weld clip to overhang of unit as shown on the submittal drawings.

**c)** Make all spring adjustments *before* flashing in the roof.



## 7 SPRING ADJUSTMENTS P6100/6200 –

**a)** Turn down (clockwise) restraint adjustment bolt until there is approximately a 1/2" gap between the bolt head and the isolation bushing as shown.

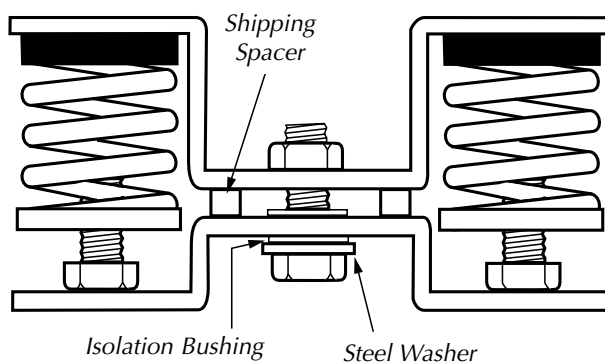
**b)** Turn each spring adjustment bolt clockwise approximately two full turns at each spring housing. Do not turn any single spring adjustment bolt more than 2 full turns at a

time. The springs *MUST* be adjusted in a *UNIFORM* fashion to properly load the springs.

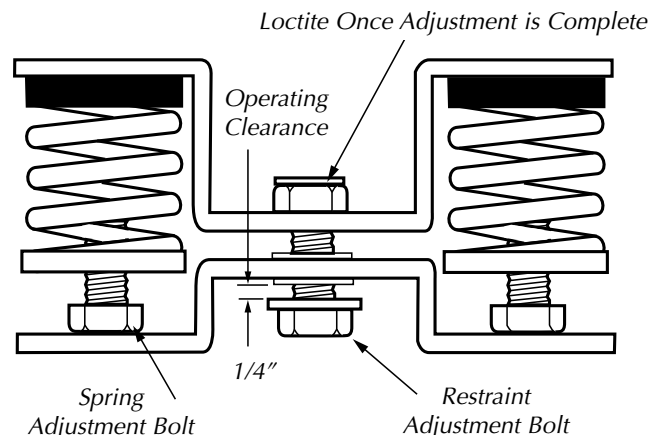
**c)** Repeat this step until spacer can be removed.

**d)** The rooftop unit is now a freely floating unit. Make all final connections. (*NOTE: All connections (electrical, water supply, ductwork) must be flexible to avoid the transmission of vibration into the surrounding structure.*)

HOUSINGS SHIPPED WITH SPACERS –



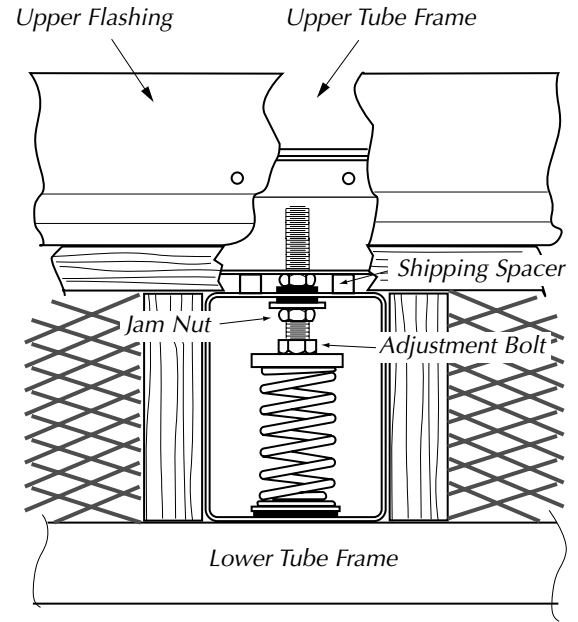
HOUSING AFTER SPRING ADJUSTMENT (WITH SPACERS REMOVED)



# VMC "P" Series Curbs – Installation Instructions

## P6300/All "R" Series Rails –

- a) Turn down (clockwise) jam nut until it almost touches the top of the adjustment bolt.
- b) Turn each spring adjustment bolt clockwise two full turns at each spring housing. Do not turn any single spring adjustment bolt more than 2 full turns at a time. The springs *MUST* be adjusted in a *UNIFORM* fashion to properly load the springs.
- c) Repeat this step until the shipping spacers can be removed.
- d) Adjust jam nut to provide 1/4" clearance between the top of the washer and the inside top of the housing.
- e) Re-install all cover plates. Be sure that the outside face of the cover plate is inside the lower flashing.
- f) Installation is now complete. (*NOTE: Waterproof roofing membrane can be extended over cover plates after spring adjustment if desired.*)

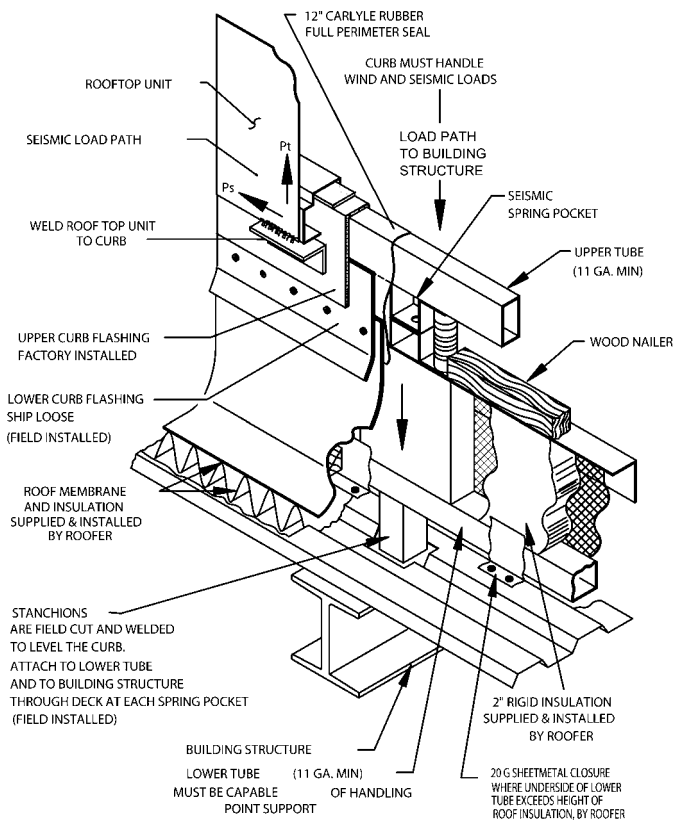


## 8 ROOFING

- a) The contractor to supply and install a 2" thick rigid insulation.
- b) Install *cant strip* if required.
- c) Bring roofing membrane up to the curb wood nailer and attach.

- d) Isolation curbs come equipped with a flexible membrane that is installed at the wood nailer over the roofing membrane.
- e) Roof curbs also come equipped with a counter flashing that is field bent and installed under the upper curb flashing.

### STEEL ROOF



### CONCRETE ROOF

