

APPLICATIONS



MODULAR & WELDED POURING FORMS

The MPF (modular pouring forms) and WPF (welded pouring forms) are designed for use with mechanical equipment that requires a concrete inertia base. The MPF/WPF Series are sturdy frames that, when filled with concrete, provide an effective means to isolate vibration and limit the motion of any demanding equipment – large pumps, fans, motors and compressors.

VMC MPF Series inertia bases should be used with pumps, fans having a 40" wheel diameter and larger, centrifugal fans driven by motors of 75 Hp or larger, and certain types of compressors. This type of equipment usually possesses low rotational speed, high static pressure, or a large unbalanced force which can not be attenuated by the use of springs alone. The benefits of using an inertia block include the addition of

mass to the isolated system which reduces movement. For example, if a 1000 lb. machine develops 100 lb. of unbalanced force, the machine would displace "X" inches. However, if you mount the machine to an inertia base weighing 1000 lb., the same 100 lb. unbalanced force must now move 2000 lb. The displacement has been reduced by 50%. VMC inertia bases also lower the center of gravity of the isolated system – offering greater stability and a rigid base for the equipment to help maintain alignment.

The MPF series feature a modular, bolt-together design that can be shipped assembled or knocked-down for field assembly. The WPF types feature a sturdy, welded design complete with reinforcing rods (rebar) welded in place.

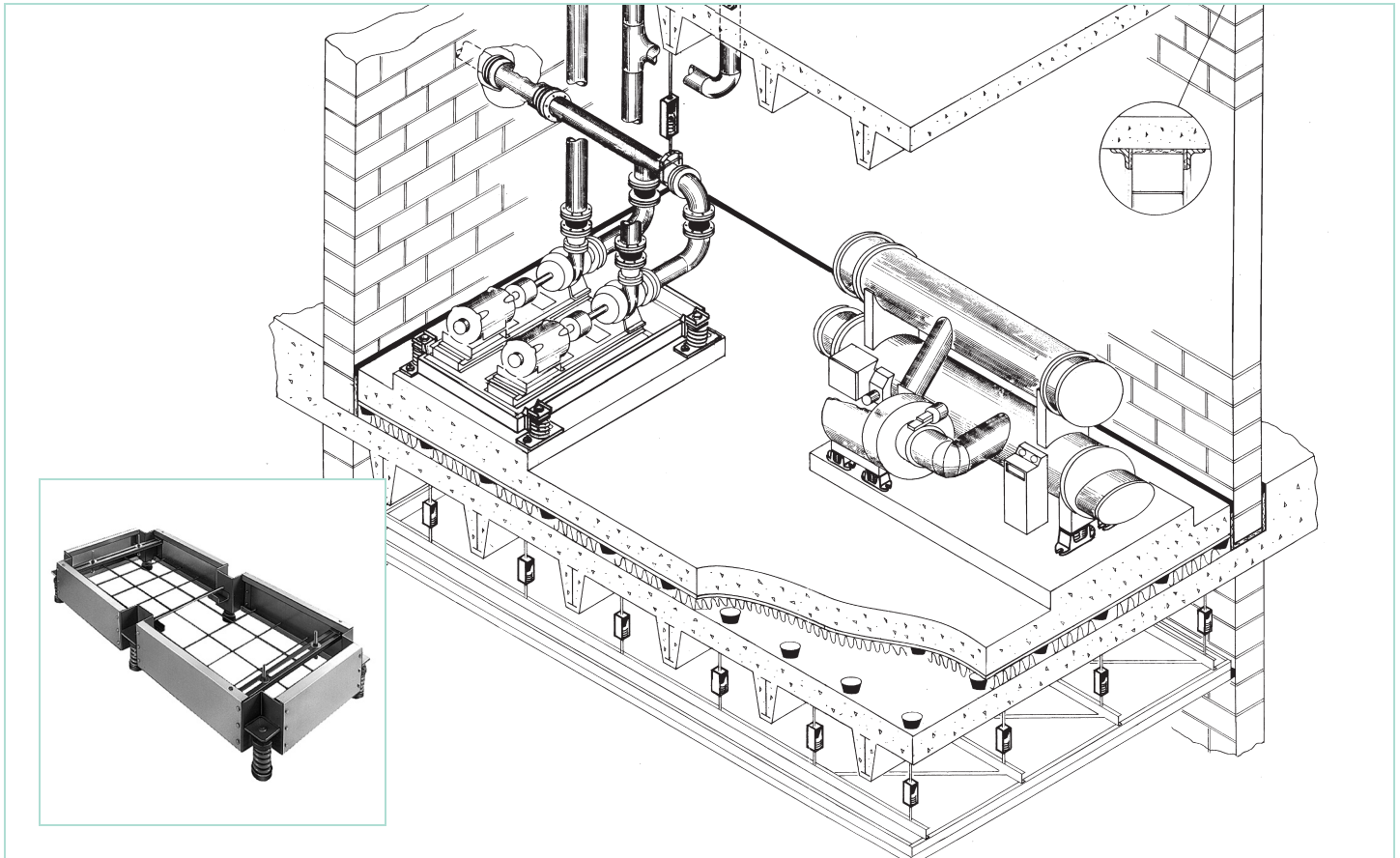
MPF FEATURES & BENEFITS

- VMC MPF Series Modular Pouring Form inertia base is available in 6" and 10" thickness. The bolt-together design comes complete with isolator brackets, anchor bolt templates, and 3/8" rebar cut to size.
- When selecting an MPF inertia base, we recommend that the thickness be a minimum of 1/12 of the longest dimension of the base, but not less than 6". Should a base greater than 10" thick be required, use our WPF Series Welded Pouring Form.

WPF FEATURES & BENEFITS

- VMC WPF Series Welded Pouring Form inertia base can be designed to accommodate virtually any application. The WPF design comes complete with isolator brackets, anchor bolt templates, and 3/8" rebar welded in place ready for concrete.
- When selecting a WPF inertia base, we recommend that the thickness be a minimum of 1/12 of the longest dimension of the base, but not less than 6". When an equipment submittal drawing is provided to the VMC Engineering department, a properly designed base drawing, indicating isolator model numbers is produced for customer approval. Once approved, drawings are provided to our manufacturing department for fabrication and shipment.

TECHNICAL



APPLICATIONS

- Pumps
- Fans
- Compressors
- Chillers

